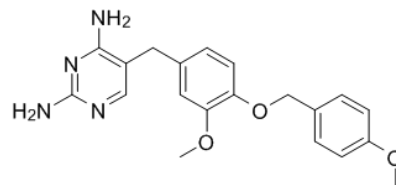


**Product Name** : GW2580  
**Cat. No.** : PC-42737  
**CAS No.** : 870483-87-7  
**Molecular Formula** : C<sub>20</sub>H<sub>22</sub>N<sub>4</sub>O<sub>3</sub>  
**Molecular Weight** : 366.4137  
**Target** : c-Fms (CSF1R)  
**Solubility** : DMSO: 17.5 mg/mL



### Biological Activity

GW2580 is a potent, selective c-Fms (**CSF1R**) inhibitor that completely inhibits human cFMS kinase in vitro at 60 nM. GW2580 is 150- to 500-fold selective compared to 26 other kinases (cKIT, cSRC, EGFR, etc.). GW2580 completely inhibits the growth of CSF-1-dependent mouse myeloid M-NFS-60 cells at 0.7 uM. GW2580 inhibits LPS-induced TNF production in mice and orally bioavailable.

### References

Conway JG, et al. *Proc Natl Acad Sci U S A*. 2005 Nov 1;102(44):16078-83.  
Conway JG, et al. *J Pharmacol Exp Ther*. 2008 Jul;326(1):41-50.  
Priceman SJ, et al. *Blood*. 2010 Feb 18;115(7):1461-71.

**Caution: Product has not been fully validated for medical applications. Lab Use Only!**

E-mail: tech@probechem.com